



Hello....
We Are Imago

01 WE ARE IMAGO**02 WHAT WE DO****03 OUR CLIENTS & CASE STUDIES****04 REFERENCES****We are Imago Interiors.....**

“No shocks or surprises...” Rowan Dawson – Wiggin LLP

T**rust.** Our business is founded on trust. We place a huge emphasis on effective communication and attention to detail, so the client team, our supply chain and immediate project team are all aligned. .

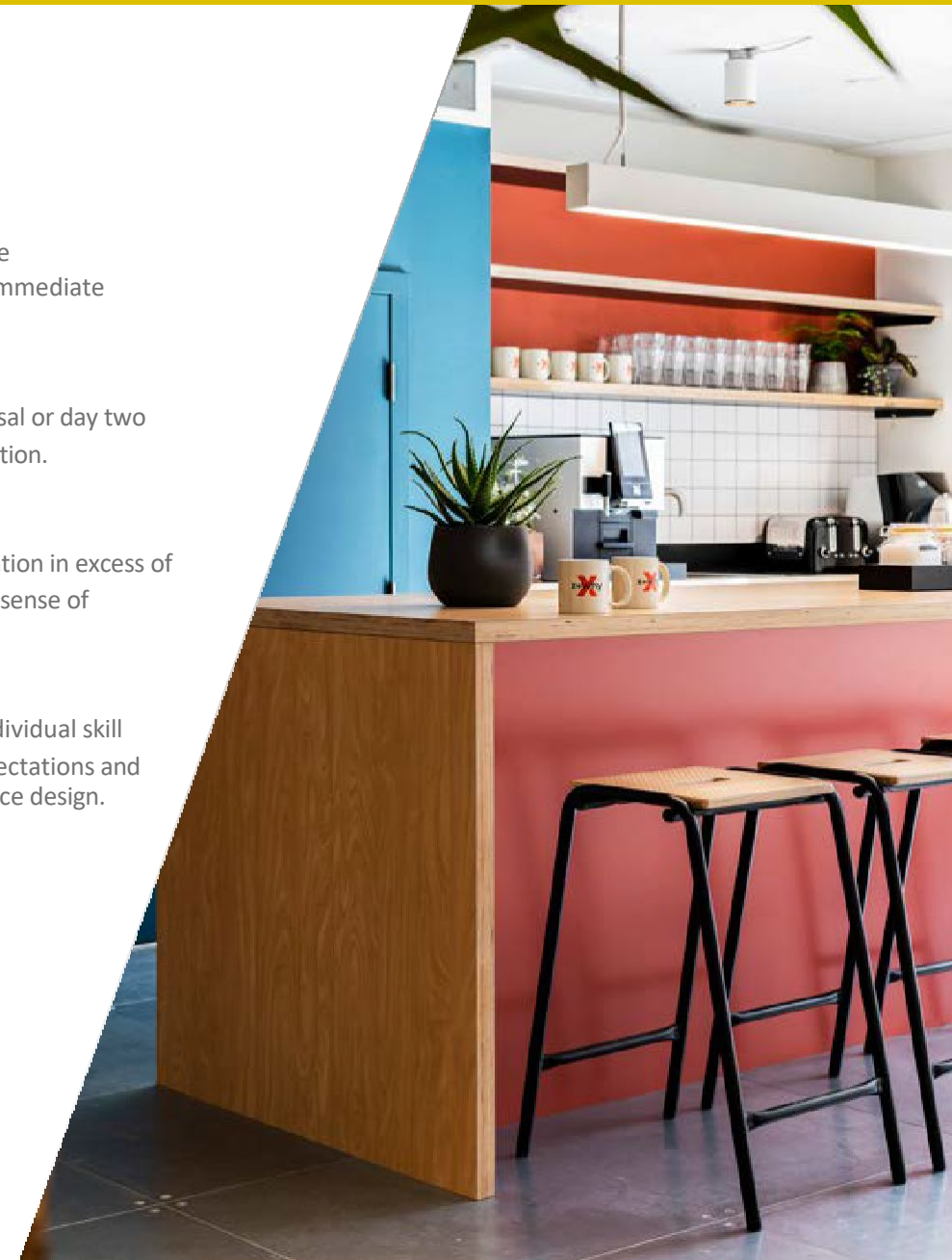
H**onesty.** Our approach is centred around a best value. Whether the initial proposal or day two post contract works, we strive to offer the most competitive, yet quality driven solution.

E**thics.** Our approach to working with clients has enabled us to have a client retention in excess of 90%/ Our clients come back, due to the way we deliver our projects and our strong sense of responsibility to exceed our client’s expectations.

M**astery.** Our combined knowledge, passion, and experience, alongside our individual skill sets, means that we’re proud to say we’re masters of our craft. We have high expectations and even higher standards, so feel confident in providing you the very best in workplace design.

Our Location

London: 6 Newman Passage, London, W1T 1EH



01 WE ARE IMAGO

02 WHAT WE DO

03 OUR CLIENTS & CASE STUDIES

04 REFERENCES



Our Service Proposition



Workplace Strategy



Space Planning



Fast-Track Design & Build



Design Led Furniture Specification



3D Isometrics & Rendering



01 WE ARE IMAGO

02 WHAT WE DO

03 OUR CLIENTS & CASE STUDIES

04 REFERENCES



TECHNOLOGY
CLIENTS



Extreme Networks

Reading

Size

16,500 Sq Ft

Sector

Technology

Duration

12 weeks

Scope

After carrying out a 'Stay or Go' Strategy and property evaluation on 3 buildings, Imago was selected to design and deliver, Extreme Networks' new EMEA Headquarters.

The brief was to deliver a new home that would be their flagship office for growth by creating a leading edge Executive Briefing Centre and working environment that reflected the companies, vision, branding and technology. The CAT B Fit-out was delivered in two phases over a 12 week period and included two separate comms. labs, containing a total of 30 I.T. racks, along with open plan desking for 90 people and a mixture of break-out and agile working zones.





Extreme Networks

Reading

3D Isometric



Extreme Networks

Reading

3D Isometric



Cuttsy & Cuttsy

Cambridge

Size

7,000 Sq Ft

Sector

Technology

Duration

6 weeks

Scope

Our client was making a significant commitment to a new office outside of Cambridge at the onset of the pandemic and had a clear vision to create a highly collaborative, inspirational and flexible workplace, that would be on brand for the business, promote staff retention and attract new talent.

Their CEO has a great eye for detail, and the focus was on quality products and finishes, the result of which has created a very cool space, and one that has received a great response from their staff who are chomping at the bit to get back full time.



Arrivia

Uxbridge

Size
9,000 Sq Ft

Sector
Technology

Duration
7 weeks

Scope

Arrivia were looking to move to a new location close to their existing offices in Uxbridge and selected the BREEAM credited Belmont House as their new location.

Having selected Imago as their partner for this project, we were able to move at pace to meet their critical deadlines. The core objectives for this offices was to deliver an inspirational and collaborative workplace, within a 7-week programme, with no margins for error.

Combined with the demise works for the landlord, Arrivia are delighted with the end result, which has had a huge impact on their workforce.



SYSTEMIQ

High Holborn

Size

8,000 Sq Ft

Sector

Technology

Duration

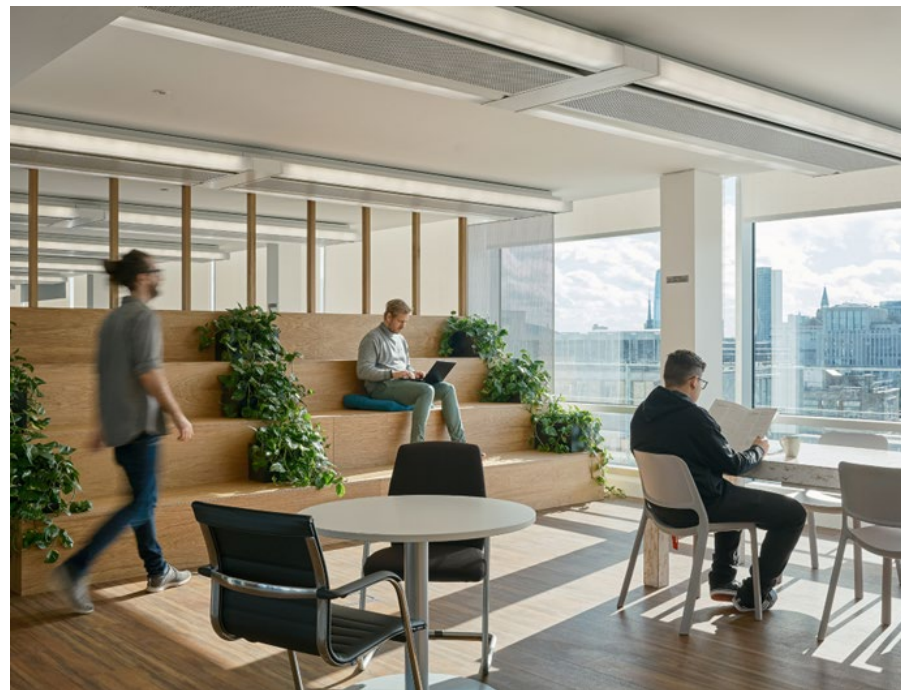
8 weeks

Scope

Having moved SYSTEMIQ out of serviced offices in 2017, Imago were delighted to move them into their third office.

The company has shown strong growth, and this project presented the perfect opportunity to carry out a workplace strategy to deliver a working environment that truly reflected their sustainable and teamwork ethics.

With an emphasis on collaboration and social engagement, combine with zones to promote heads up and heads down working, we were able to implement a working environment that is both engaging and in line with stakeholder and staff expectations.



Imagination Technologies

Hertfordshire

Size
40,000 Sq Ft

Sector
Technology

Duration
12 weeks

Scope
Imago were retained to carry out a workplace analysis to establish whether our client could exercise a lease break in their 45,000 sq ft building and create a hybrid work environment in their remaining 40,000 sq ft building. The outcome enabled them to save in excess of £2million a year in rent and provide a post covid workplace that had a positive impact on staff coming back to the office.

The key focus was to create team hubs and a strong emphasis on collaboration, communication and general wellbeing.

Set over 3 floors, social interaction and collaboration was a key theme with a large break out, subsidised catering and gaming area focused on the lower ground floor.

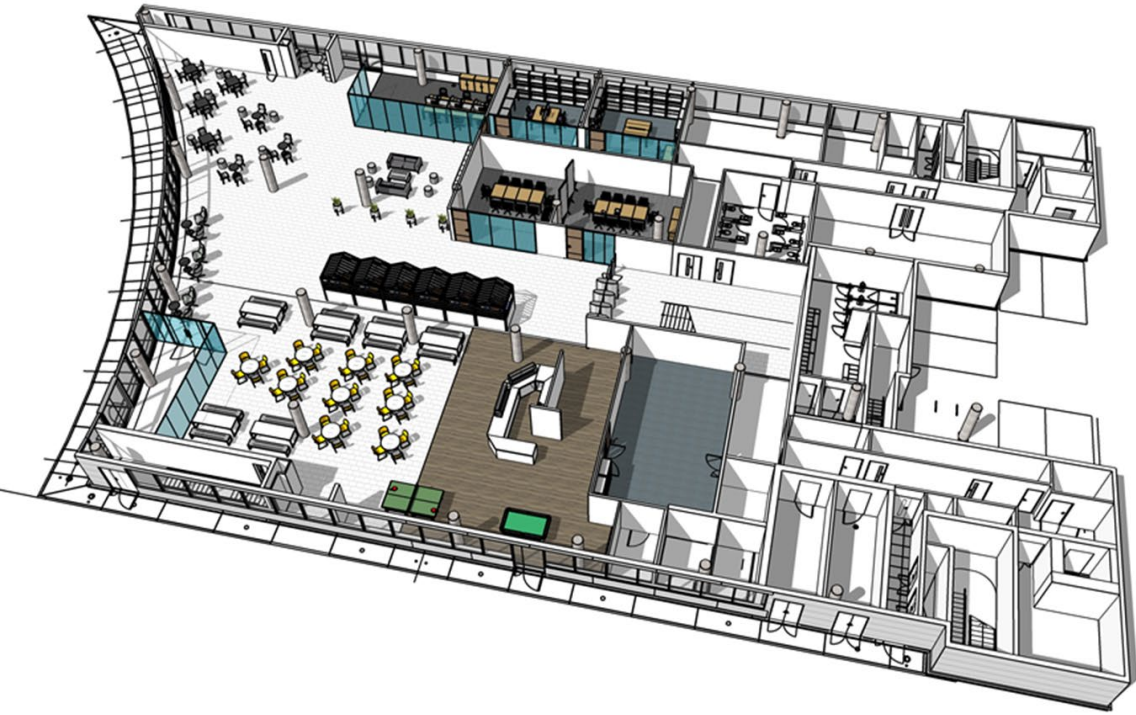
The end result had a significant impact on the level of employees returning to the office, post pandemic.



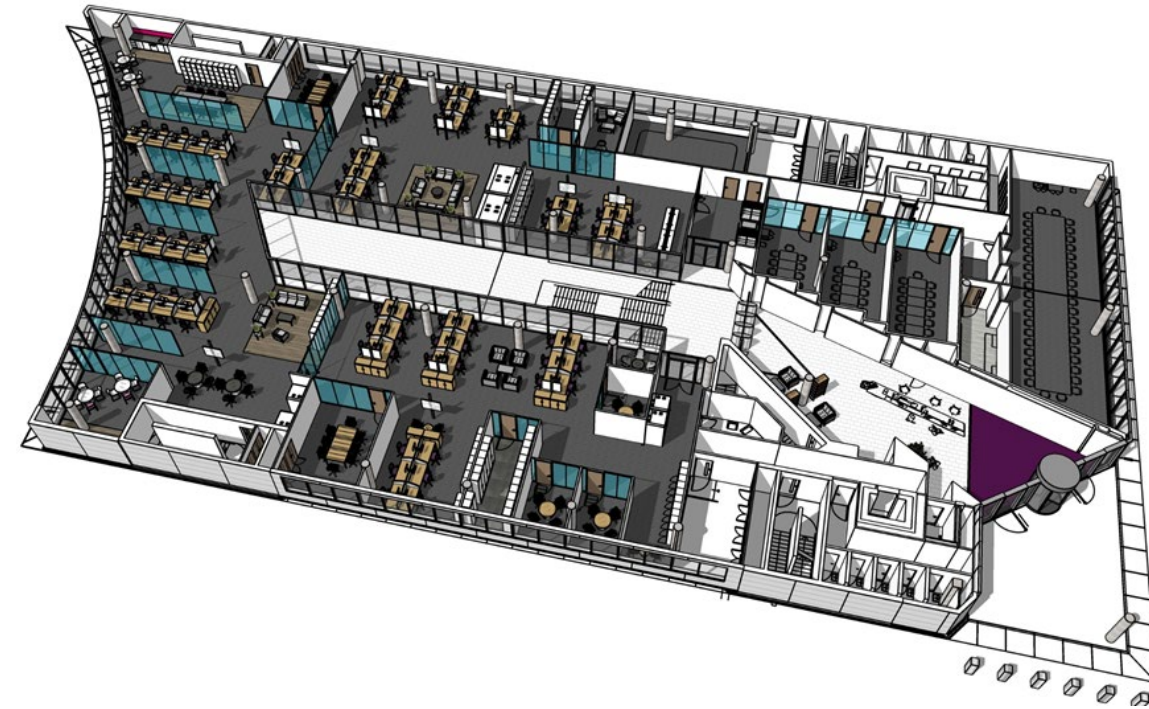
Imagination Technologies

Ground Floor

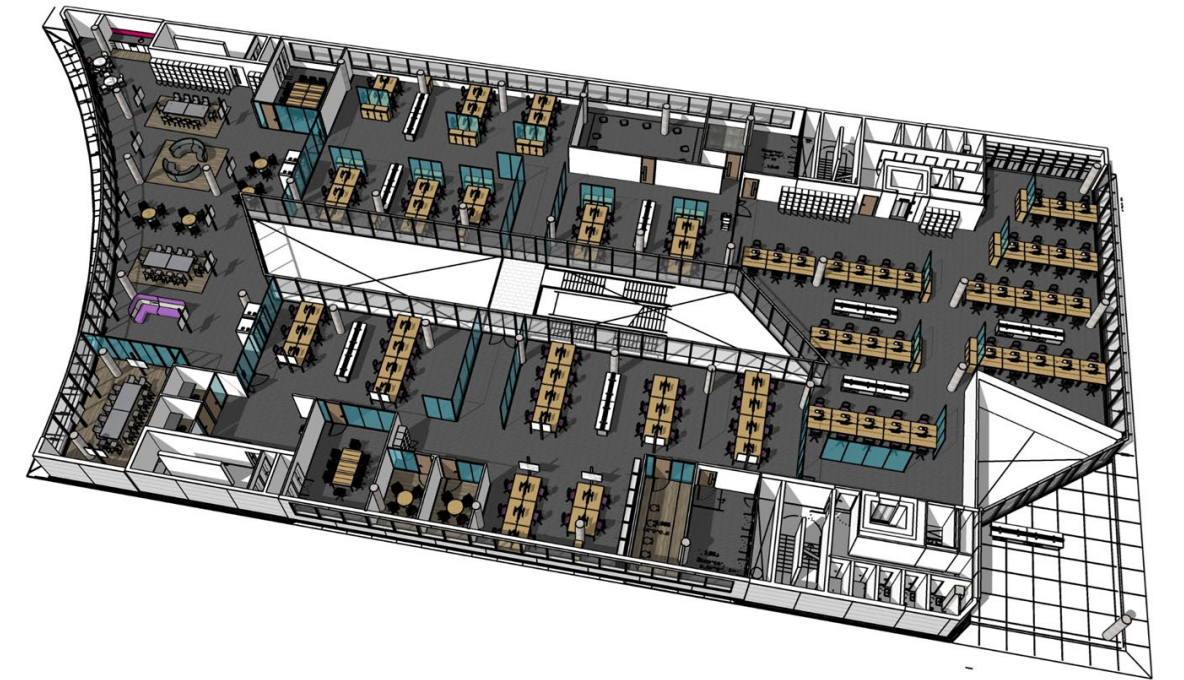
3D Isometric



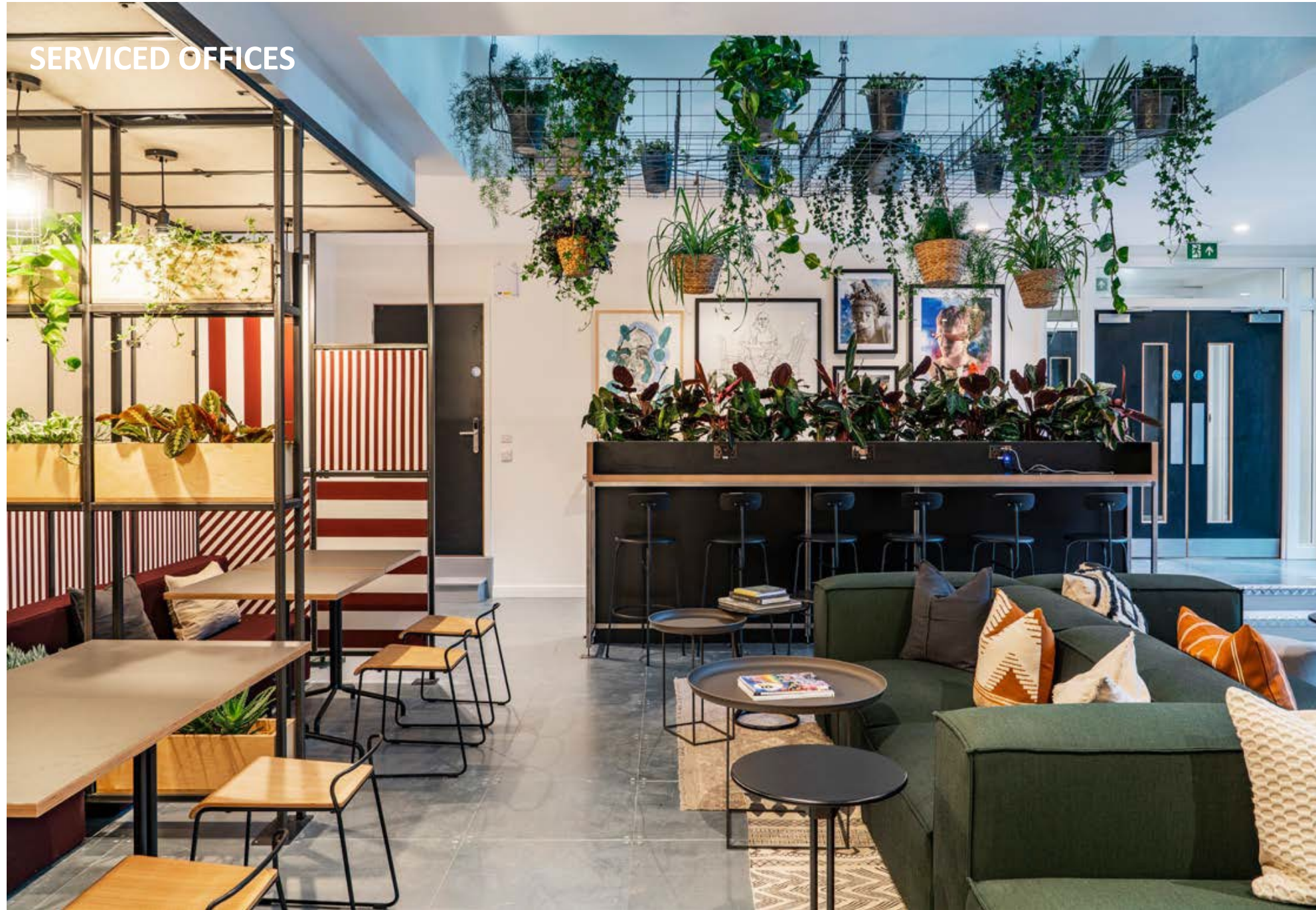
Ground Floor



Ground Floor



SERVICED OFFICES



x + why

London

Size

22,500 Sq Ft

Sector

Workspace Solution Provider

Duration

12 weeks

Scope

This was x+why' first property, which is located on the fringe of the City of London and their vision was to create an environment which merges design, technology and wellness to provide businesses with the perfect home from which to grow.

Members and co-workers will benefit from both the space and knowledge of being part of a community that understands the link between doing good and doing well.

Squire & Partners took the design lead and imago worked closely with their team and the client to provide various furniture and bespoke joinery items.

Video Link

<https://www.youtube.com/watch?v=DtpymUOMwjg>





LEGAL
CLIENTS



Wiggin LLP

Cheltenham

Size

12,000 Sq Ft

Sector

Law

Duration

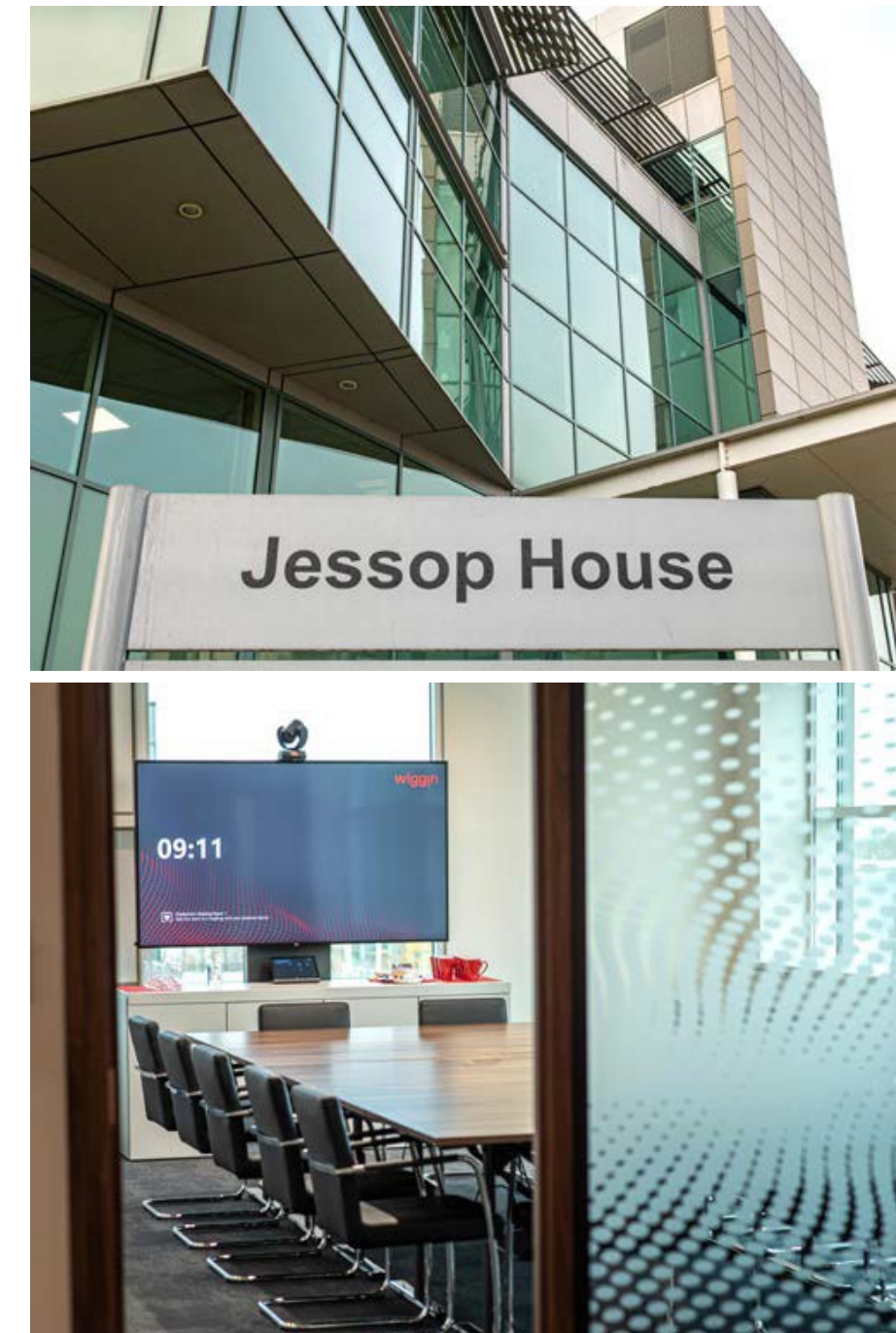
10 weeks

Scope

With the pandemic looking as though it was going to go into 2021, the Wiggin project team approached Imago to prepare a 'future of work strategy', which was to consider the workplace, the Wiggin approach to staffing levels, specific team requirements and the Wiggin culture. This resulted in a workplace strategy proposal for their 12,000 sq ft office in Cheltenham and the recently refurbished London office, along with a new 5,000sq ft office in Brussels.

With Partner Board sign off, Imago commenced on implementing the workplace strategy, working on all three projects simultaneously. The Cheltenham office was taken back to CAT A with a completely new CAT B layout, furniture and AV solution.

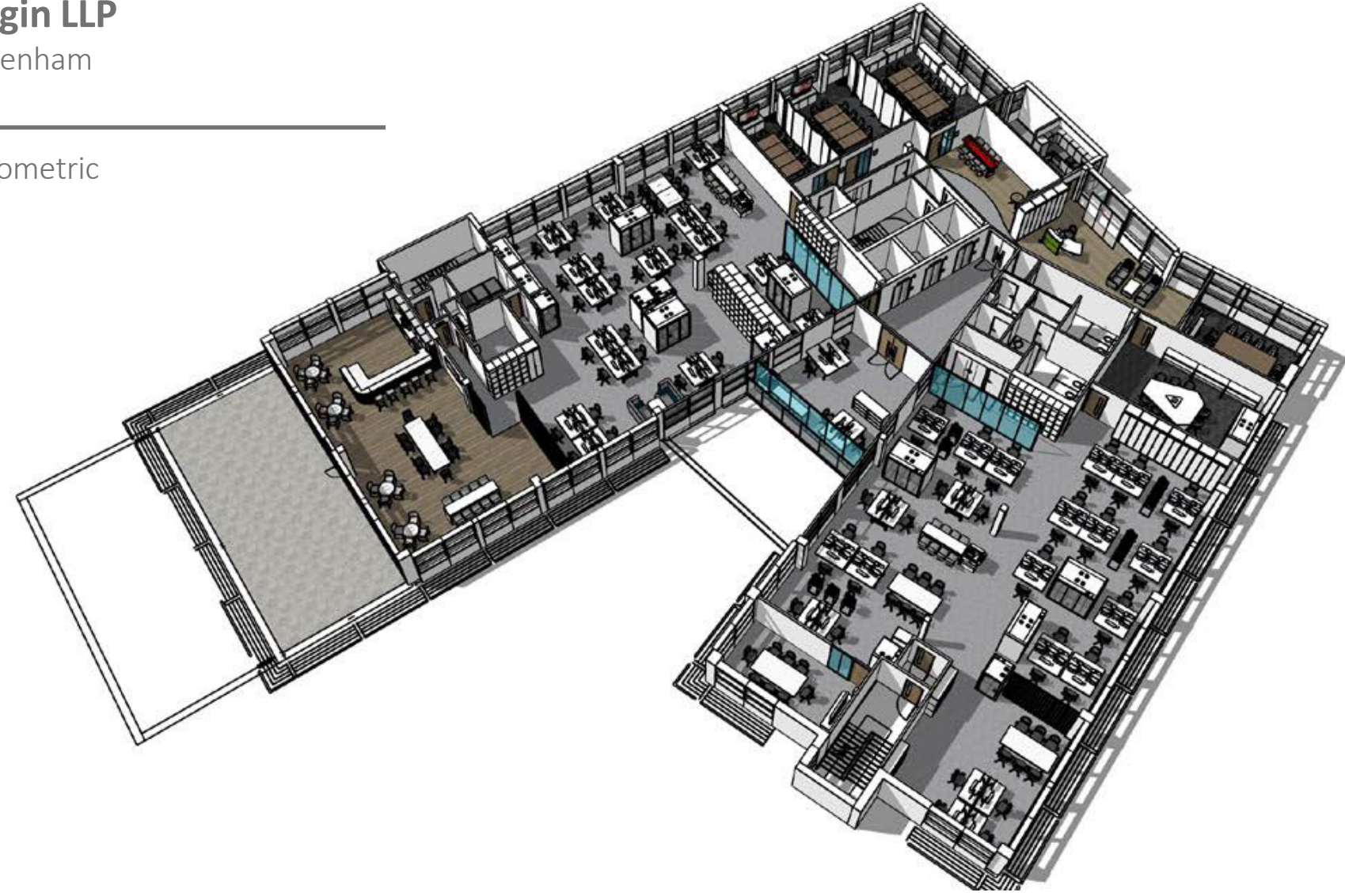
Whilst London there were some minor amendments to the previous works, along with a full furniture package. In Brussels, the project involved a minor fit-out and full furniture package.





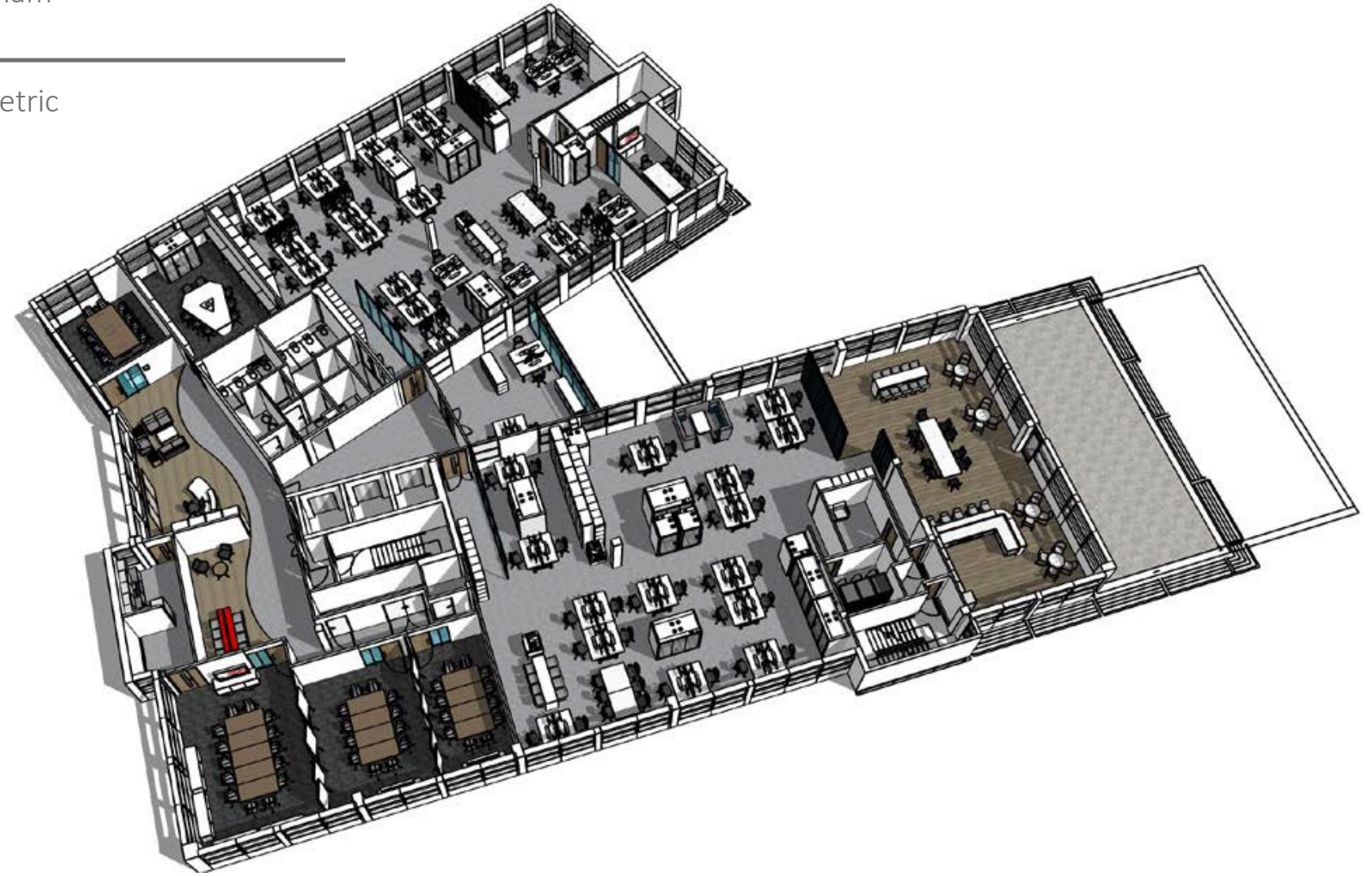
Wiggin LLP
Cheltenham

3D Isometric



Wiggin LLP
Cheltenham

3D Isometric



Wiggin LLP

London

Size

15,000 Sq Ft

Sector

Law

Duration

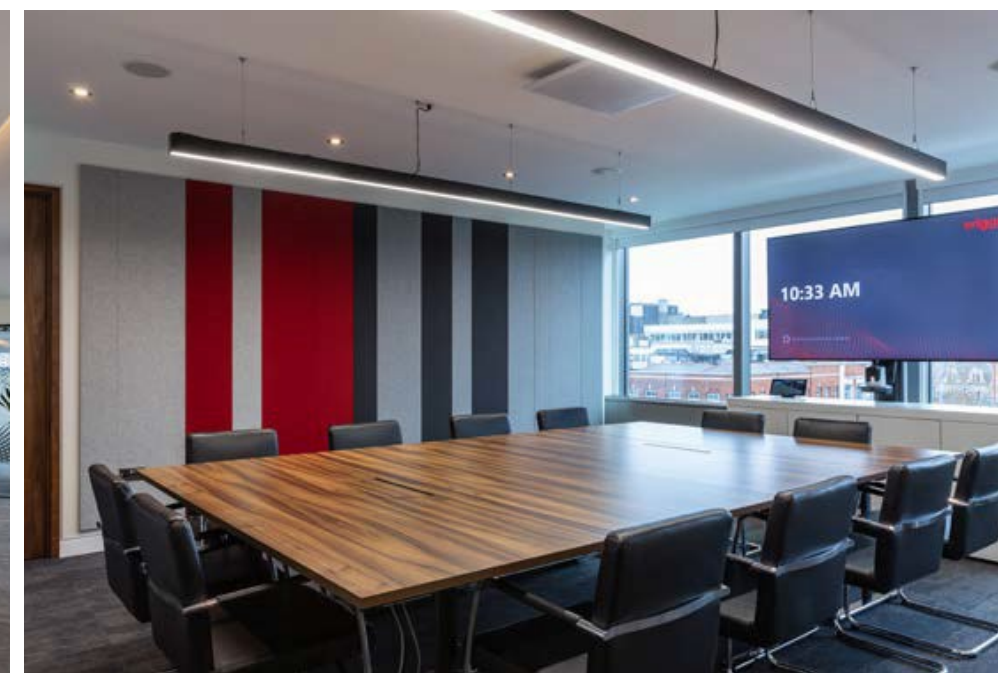
20 weeks (Phased Programme Per Floor)

Scope

Imago were appointed to carry out a refurbishment of two existing floors, plus a new client floor at the Wiggin London office in Fitzrovia.

The 15,000 sq ft project commenced at the very start of lockdown and with lockdown guidelines permitting “construction projects” and the client keen to get the fit-out works completed, Imago were able to start the project working to a strict Covid-safe protocol.

With a reduced team and a slight extension to the programme Imago delivered the project which included the 5th floor client lounge and meeting rooms, along with the 9th & 10th floor open plan, breakout and tea-points.



FINANCIAL CLIENTS



EQ Investors

London

Size

6,000 Sq Ft

Sector

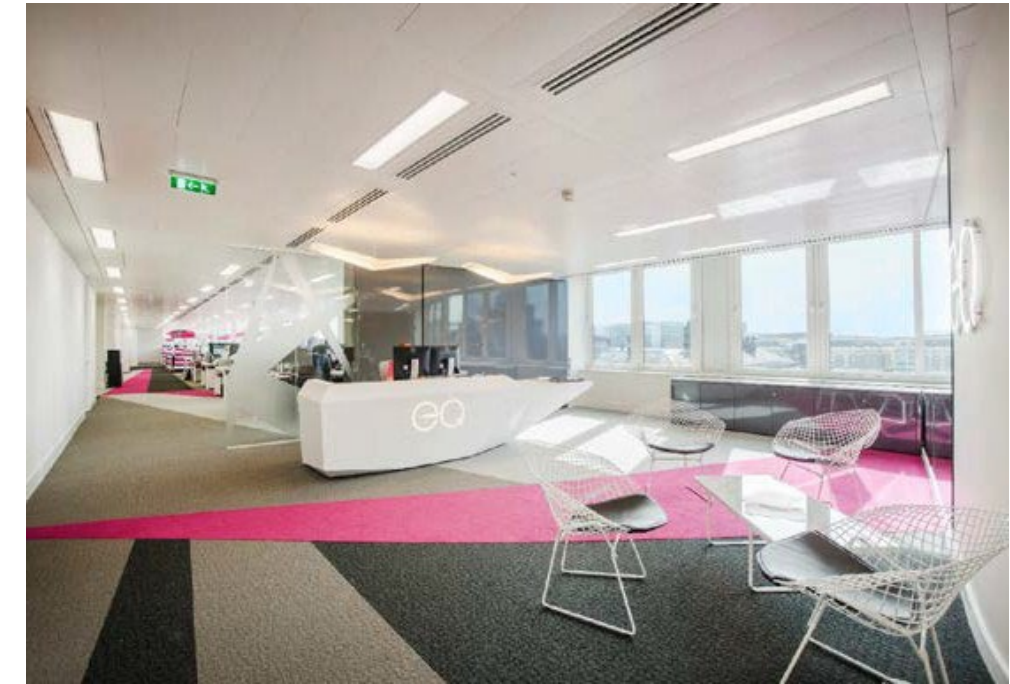
Financial

Duration

6 weeks

Scope

Full design and build relocation for EQ Investors new London HQ. The brief was to create an excellent client meeting facility and workplace for 85 people, inclusive of a "beach" themed break-out space.



Tilney BEST INVEST

Liverpool

Size

14,500 Sq Ft

Sector

Financial

Duration

10 weeks

Scope

Full strip out of existing space back to shell & core. Fit-out both CAT A and Cat B space to a high specification, inclusive of a significant mechanical and electrical package in one of Liverpool's iconic buildings.



Hamish Leng

London

Size

5,000 Sq Ft

Sector

Financial

Duration

8 weeks

Scope

Due to strong growth, Hamish Leng & Company moved from a residential property to their new offices in Lowndes Street. Our scope of works was for the initial strip out and re-instatement of CAT A followed by the CAT B fit-out and new furniture.

The brief was to replicate the look and feel of the private residence that Hamish' clients had been used to, whilst creating an office environment that would accommodate their growth.



Falco Capital

London

Size

4,000 Sq Ft

Sector

Financial

Duration

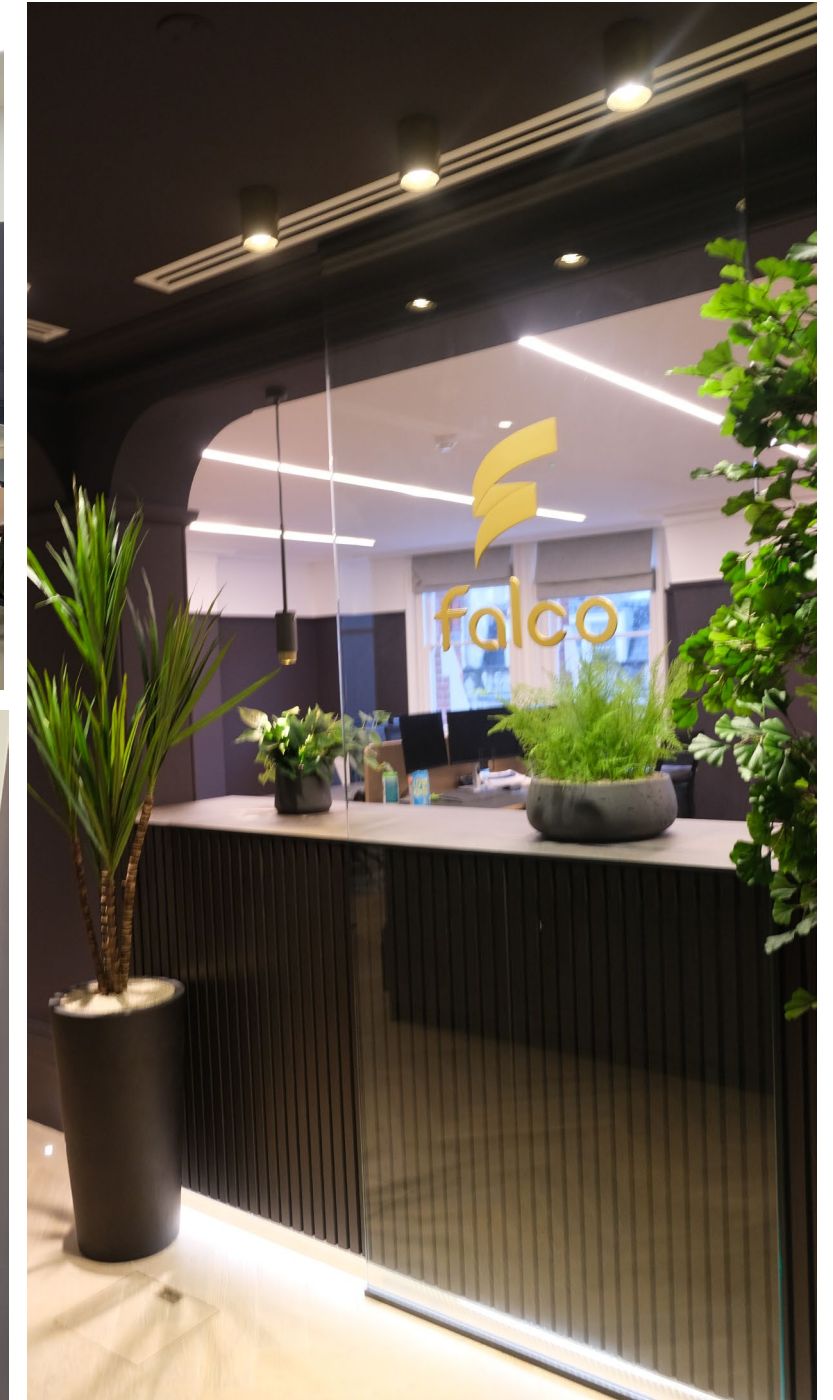
8 weeks

Scope

Imago were appointed to carry out a design & build fit-out project for this niche fund.

The 4,000 sq ft project located in the City of London has amazing views and being on two floors our client wanted to maximise the space by having open plan desking and meeting rooms on the lower floor and the upper floor for client entertaining.

The fit-out and furniture was delivered to a high standard and well received by our client.



Private Client

London

Size

4,000 Sq Ft

Sector

Financial

Duration

8 weeks

Scope

Imago were appointed to carry out a design & build fit-out project for this high-profile client.

The 4,000 sq ft project located close to Parliament, is a central hub for the executive team, where a balance of quiet work zones, open plan workspace and a boardroom were required.

The fit-out and furniture was delivered to a high standard and well received by our client.



**PHARMACEUTICAL
CLIENTS**



PhoreMost
Cambridge

Size
8,000 Sq Ft

Sector
Pharmaceuticals

Duration
6 weeks

Scope
Having completed a project at The Works for a previous client, Phoremost reached out to us as they loved the quality of our work.

Working within tight budget parameters set by the client we focused on key areas that would deliver the most impact with a fantastic break out space to encourage collaboration, full meeting suites with AV & open plan booths to enable quick phone calls or meetings away from desks.



PhoreMost

Cambridge

3D Isometric



PhoreMost

Cambridge

3D Isometric





abCellera

Cambridge

Size
6,000 Sq Ft

Sector
Life Sciences

Duration
6 weeks

Scope
Imago were appointed to design and fit-out the non-lab areas for abCellera's new UK facility.

Working closely with the UK CEO and Global Real Estate Director, the imago team focused on the fit-out and furniture to the main reception, meeting rooms, open plan workspace and tea-point to create a warm, on-brand interior.



LANDLORD CLIENTS



209-211 City Road

London

Size

5000 Sq Ft

Sector

Landlord Works

Duration

10 weeks

Scope

The brief was to refurbish an outdated and tired commercial office space into a fresh, modern and energy efficient space.

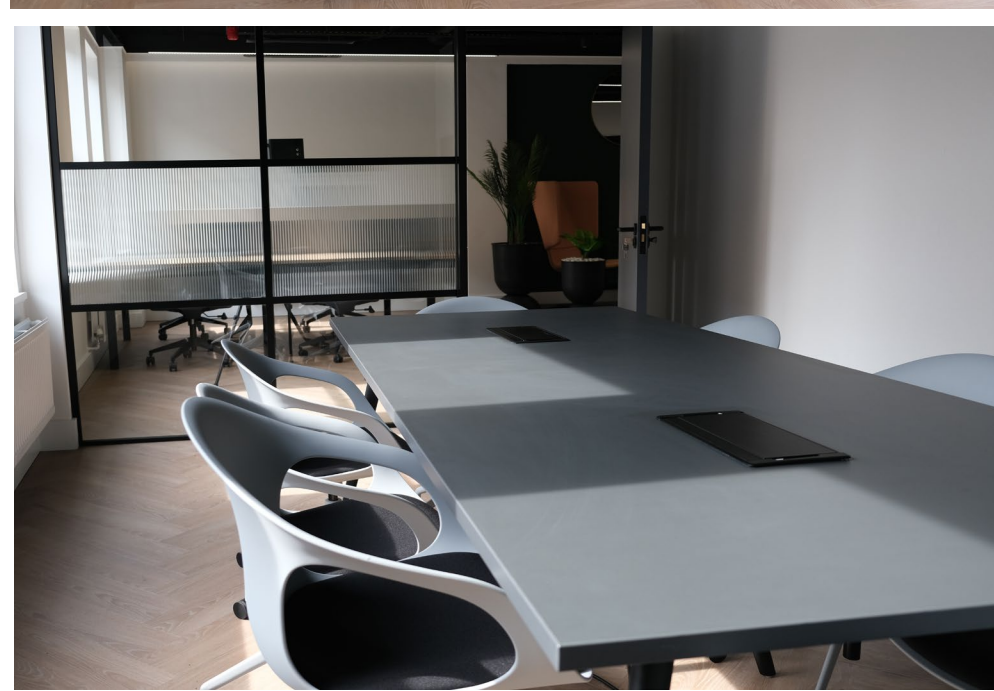
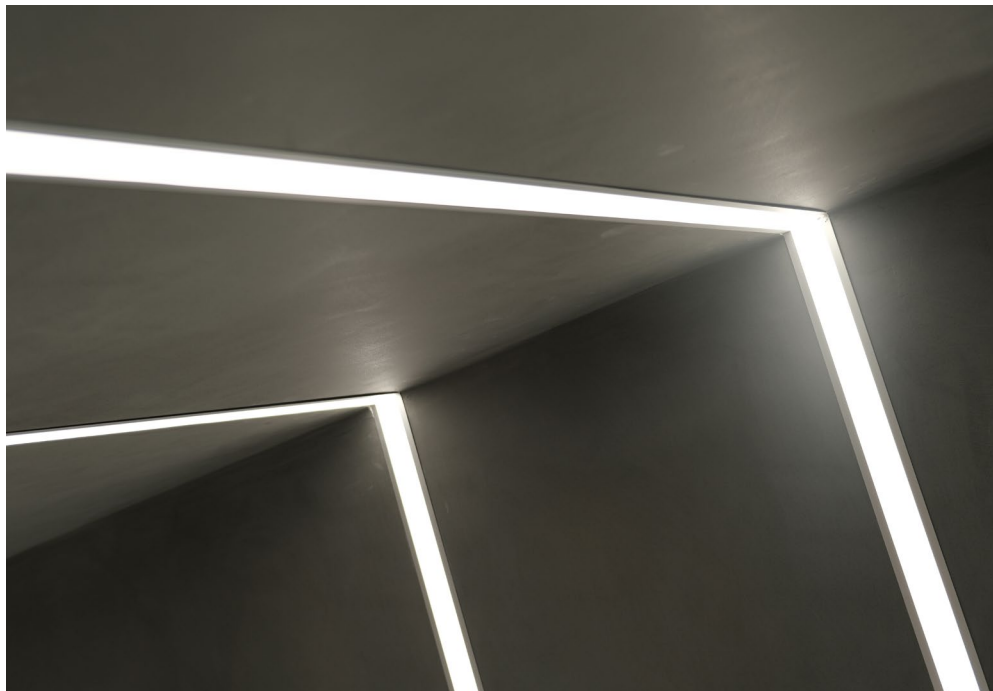
These works included a new entrance corridor, common areas, stairs and two separate office floors.

Each floor has exposed services to a black sprayed ceiling, new floor boxes and flooring, a new tea-point and meeting room.

Working closely with the client and their commercial property agents, Imago brought what was a tired space back to life.

As a finishing touch, one of the floors was furnished to offer a plug & play solution.





Inventa

Cambridge

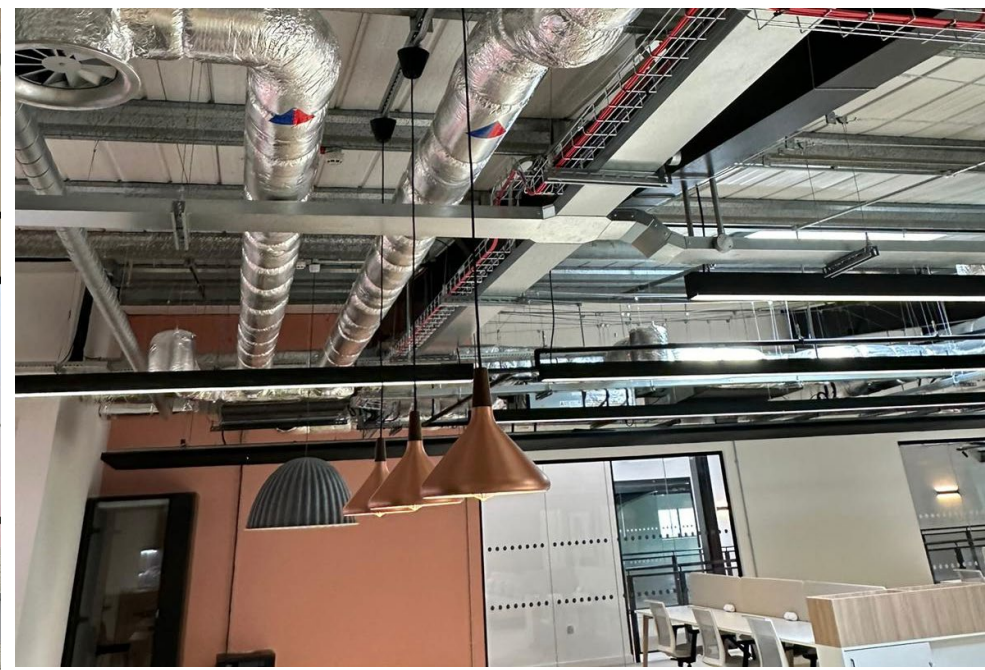
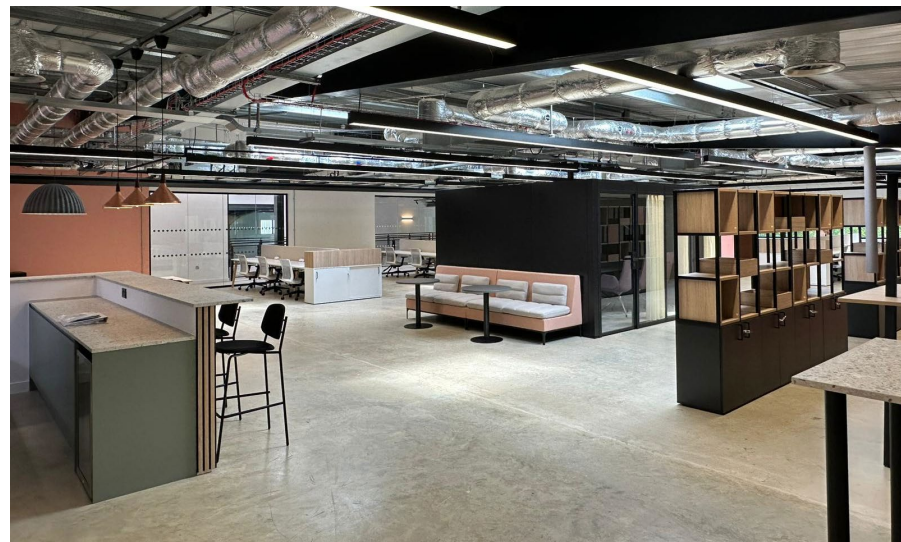
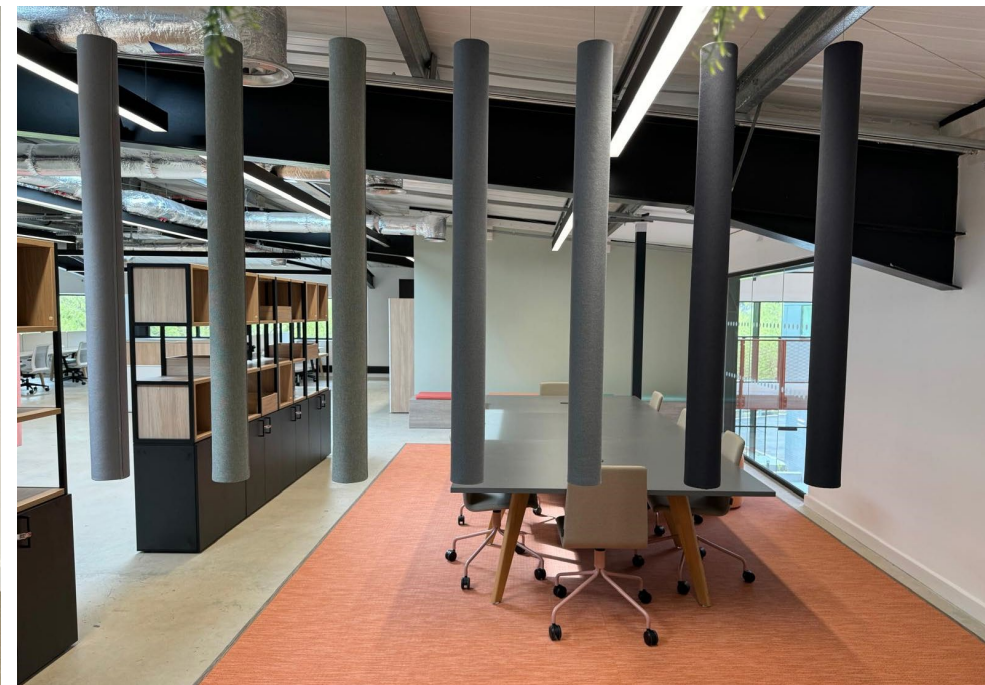
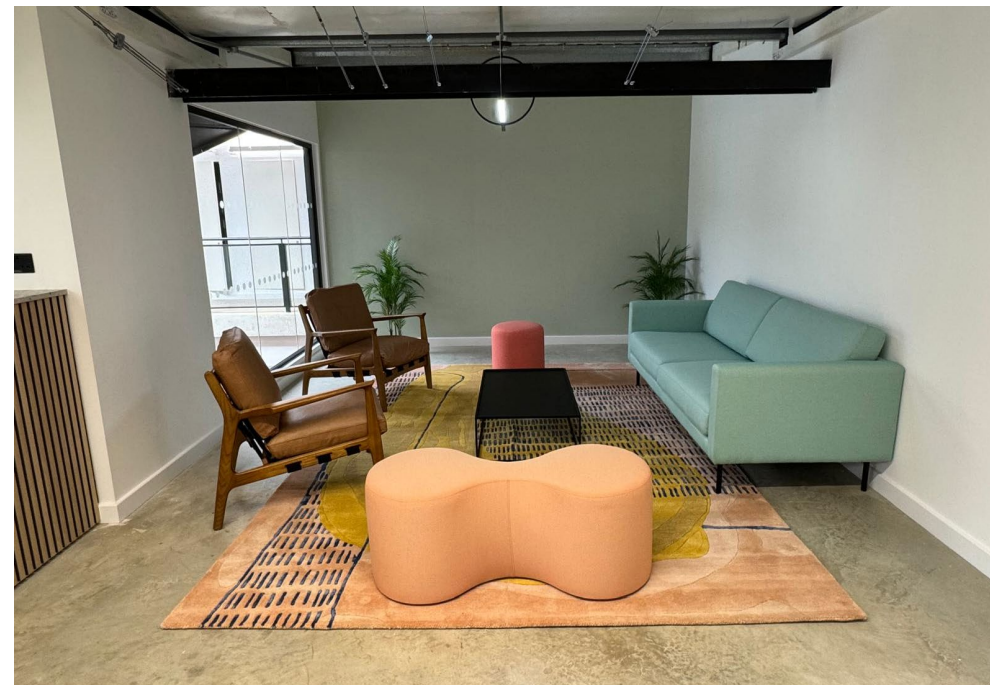
Size
5,000 Sq Ft

Sector
Life Sciences

Duration
6 weeks

Scope
Cat A+ plug & play fit-out and furniture for Mission Street's amazing new campus in Oxford.

The unique construction of the building & roof detail, created a challenge to ensure the layout, services & furniture complimented each other without compromise.



HOSPITALITY CLIENTS



Roffey Park

Sussex

Size

3,500 Sq Ft

Sector

Hospitality

Duration

10 weeks

Scope

Demolish existing flat roof and build new pitch roof and bi-fold doors to the main restaurant. Design and fit-out new 100 people restaurant, bar and function space.



bene

London EC2

Size

6,000 Sq Ft

Sector

Showroom

Duration

6 weeks

Scope

Imago were appointed to deliver bene's new London showroom, in the heart of Clerkenwell.

Working closely with bene's internal designer, we were able to develop the concept design to create an amazing environment which enabled flexibility within the showroom and separate collaborations hubs, whilst showcasing the bene products.

The end result, provides a light and airy space, with a clear symmetry to compliment the base build design, whilst creating a blend of flexible and fixed meeting and working zones



Coffee Republic

London

Size

1.650 Sq Ft

Sector

Hospitality

Duration

4 weeks

Scope

Cat A & B fit-out of Café Bar in a conservation area listed building. complete strip-out and fit-out of coffee lounge, servery, BOH, WC facilities and external signage



01 WE ARE IMAGO

02 WHAT WE DO

03 OUR CLIENTS & CASE STUDIES

04 REFERENCES



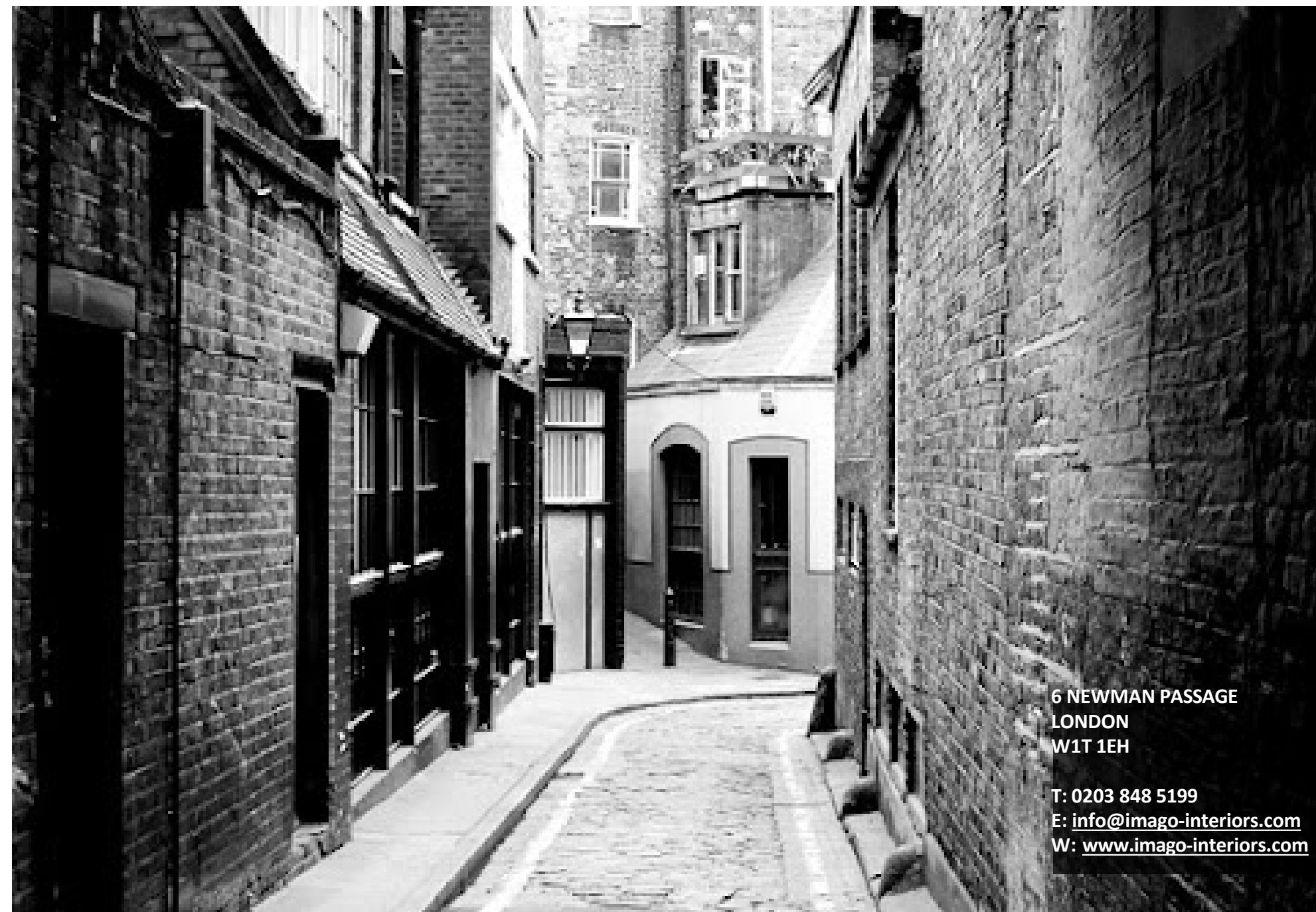
Contact: Ben Onyemem
Company: SYSTEMIQ
T: 07500 043385
E: ben.onyemem@systemiq.earth

Contact: Will Douglas
Company: Caius Capital LLP
T: 0207 190 7946
E: william.douglas@caiuscapital.com

Contact: Mandy Hinder
Company: Extreme Networks
T: 0118 929 1200
E: mhinder@extremenetworks.com

90% Of Our Clients Work With Us Again...

imago
interiors



6 NEWMAN PASSAGE
LONDON
W1T 1EH

T: 0203 848 5199
E: info@imago-interiors.com
W: www.imago-interiors.com